

# Roanoke River Paddle Trail Eastern Section

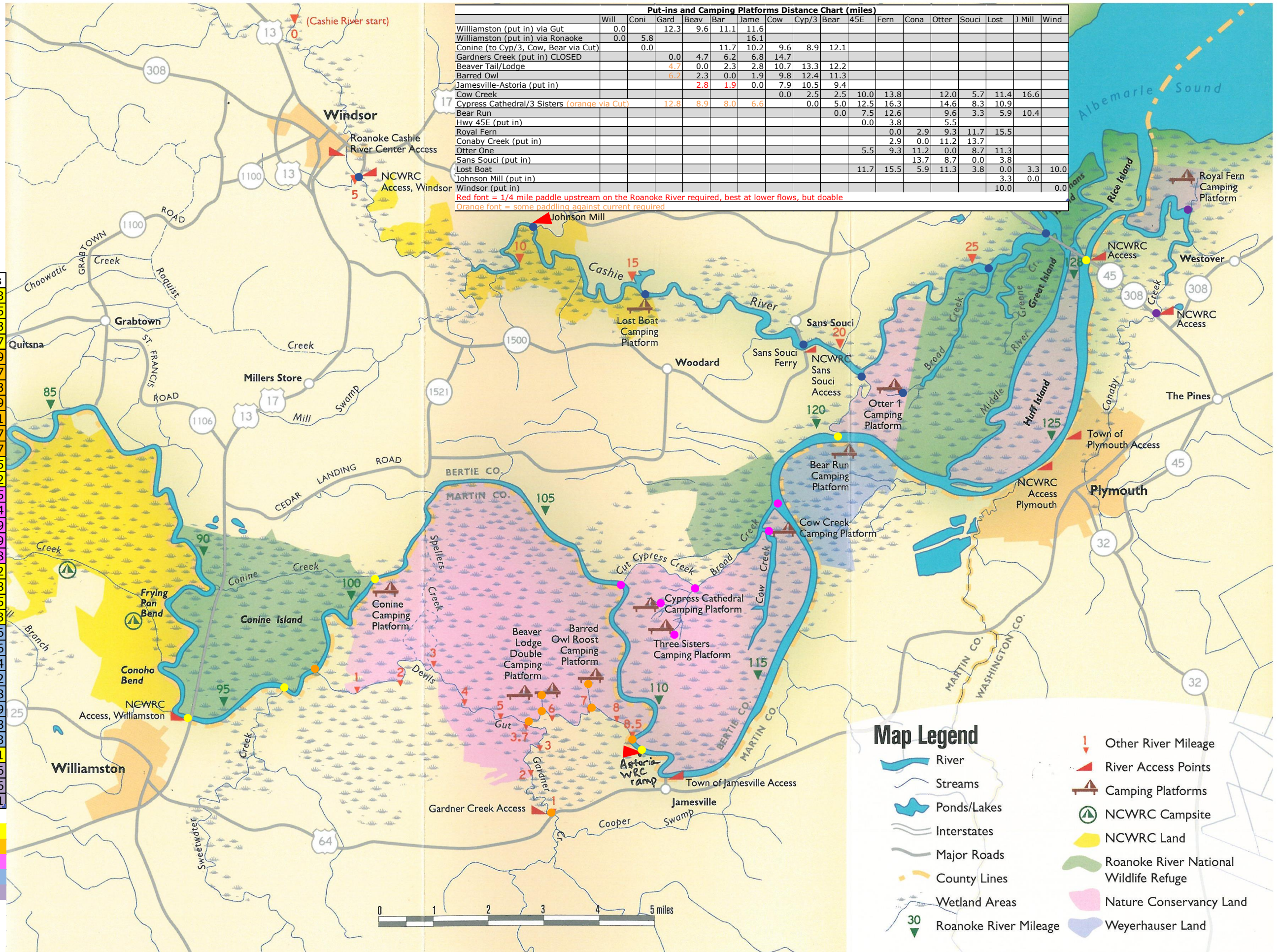
| Locations (marked w/ dots)       | Miles |
|----------------------------------|-------|
| Williamston to Sweetwater        | 1.93  |
| Sweetwater mouth to Gut upper    | 1.05  |
| Gut upper to Conine              | 2.83  |
| Conine to Cut Cypress            | 6.27  |
| Gut upper to Gardner Creek       | 5.59  |
| Gardner Crk to Upper Deadwater   | 0.63  |
| Upper Deadwater to Beaver Tail   | 0.39  |
| Upper to Lower Deadwater         | 1.21  |
| Lower Deadwater to Barred Owl    | 0.7   |
| Lower Deadwater to Gut lower     | 0.97  |
| Gut lower to Astoria ramp        | 0.25  |
| Astoria ramp to mouth Broad      | 7.42  |
| Broad mouth to Cow Creek         | 0.5   |
| Broad mouth to lower Cut         | 2.14  |
| Cut lower to Cypress Cathedral   | 0.9   |
| Cut lower to Three Sisters       | 0.9   |
| Cut lower to upper               | 1.68  |
| Cut Cypress upper to Gut lower   | 3.72  |
| Broad mouth to Thoroughfare S    | 1.98  |
| Thoroughfare S to 45E ramp       | 7.5   |
| Thoroughfare S to 45E via Middle | 8.03  |
| Thoroughfare (N-S)               | 2.06  |
| Thoroughfare N to Otter Creek    | 4.36  |
| Otter Creek to Otter One         | 3.14  |
| Thoroughfare N to Sans Souci     | 1.2   |
| Sans Souci to Lost Boat          | 3.8   |
| Lost Boat to Johnson Mill        | 3.29  |
| Johnson Mill to Windsor          | 6.68  |
| Otter Creek to 45W               | 1.33  |
| 45W to 45E boat ramp             | 1     |
| 45E boat ramp to Fern mouth      | 3.36  |
| Fern mouth to Royal Fern         | 0.46  |
| Fern mouth to Conaby ramp        | 2.41  |

|                              |
|------------------------------|
| Roanoke River                |
| Devil's Gut and tributaries  |
| Broad Creek and tributaries  |
| Cashie River and tributaries |
| Conaby Creek and tributaries |

Underlined names = camping platforms  
*Italicized names* = boat ramps

|  | Will | Coni | Gard | Beav | Bar | Jame | Cow  | Cyp/3 | Bear | 45E  | Fern | Cona | Otter | Souci | Lost | J Mill | Wind |
|--|------|------|------|------|-----|------|------|-------|------|------|------|------|-------|-------|------|--------|------|
| Williamston (put in) via Gut                 | 0.0  |      |      |      |     |      |      |       |      |      |      |      |       |       |      |        |      |
| Williamston (put in) via Ronaake             | 0.0  | 5.8  |      |      |     |      |      |       |      |      |      |      |       |       |      |        |      |
| Conine (to Cyp/3, Cow, Bear via Cut)         |      | 0.0  |      |      |     |      |      |       |      |      |      |      |       |       |      |        |      |
| Gardners Creek (put in) CLOSED               |      |      | 0.0  | 4.7  | 6.2 | 6.8  | 14.7 |       |      |      |      |      |       |       |      |        |      |
| Beaver Tail/Lodge                            |      |      | 4.7  | 0.0  | 2.3 | 2.8  | 10.7 | 13.3  | 12.2 |      |      |      |       |       |      |        |      |
| Barred Owl                                   |      |      | 6.2  | 2.3  | 0.0 | 1.9  | 9.8  | 12.4  | 11.3 |      |      |      |       |       |      |        |      |
| Jamesville-Astoria (put in)                  |      |      |      | 2.8  | 1.9 | 0.0  | 7.9  | 10.5  | 9.4  |      |      |      |       |       |      |        |      |
| Cow Creek                                    |      |      |      |      |     |      | 0.0  | 2.5   | 2.5  | 10.0 | 13.8 |      | 12.0  | 5.7   | 11.4 | 16.6   |      |
| Cypress Cathedral/3 Sisters (orange via Cut) |      |      | 12.8 | 8.9  | 8.0 | 6.6  |      | 0.0   | 5.0  | 12.5 | 16.3 |      | 14.6  | 8.3   | 10.9 |        |      |
| Bear Run                                     |      |      |      |      |     |      |      |       |      | 7.5  | 12.6 |      | 9.6   | 3.3   | 5.9  | 10.4   |      |
| Hwy 45E (put in)                             |      |      |      |      |     |      |      |       |      | 0.0  | 3.8  |      | 5.5   |       |      |        |      |
| Royal Fern                                   |      |      |      |      |     |      |      |       |      |      | 0.0  | 2.9  | 9.3   | 11.7  | 15.5 |        |      |
| Conaby Creek (put in)                        |      |      |      |      |     |      |      |       |      |      | 2.9  | 0.0  | 11.2  | 13.7  |      |        |      |
| Otter One                                    |      |      |      |      |     |      |      |       |      | 5.5  | 9.3  | 11.2 | 0.0   | 8.7   | 11.3 |        |      |
| Sans Souci (put in)                          |      |      |      |      |     |      |      |       |      |      |      | 13.7 | 8.7   | 0.0   | 3.8  |        |      |
| Lost Boat                                    |      |      |      |      |     |      |      |       |      |      |      | 11.7 | 15.5  | 5.9   | 11.3 | 3.8    | 0.0  |
| Johnson Mill (put in)                        |      |      |      |      |     |      |      |       |      |      |      |      |       |       |      | 3.3    | 0.0  |
| Windsor (put in)                             |      |      |      |      |     |      |      |       |      |      |      |      |       |       |      | 10.0   | 0.0  |



Red font = 1/4 mile paddle upstream on the Roanoke River required, best at lower flows, but doable  
 Orange font = some paddling against current required



|  |  |
|--|--|
|  | River                                  |
|  | Streams                                |
|  | Ponds/Lakes                            |
|  | Interstates                            |
|  | Major Roads                            |
|  | County Lines                           |
|  | Wetland Areas                          |
|  | Roanoke River Mileage                  |
|  | Other River Mileage                    |
|  | River Access Points                    |
|  | Camping Platforms                      |
|  | NCWRC Campsite                         |
|  | NCWRC Land                             |
|  | Roanoke River National Wildlife Refuge |
|  | Nature Conservancy Land                |
|  | Weyerhaeuser Land                      |



# Roanoke River Paddle Trail Eastern Section

-  Camping platform
-  Boat ramp

